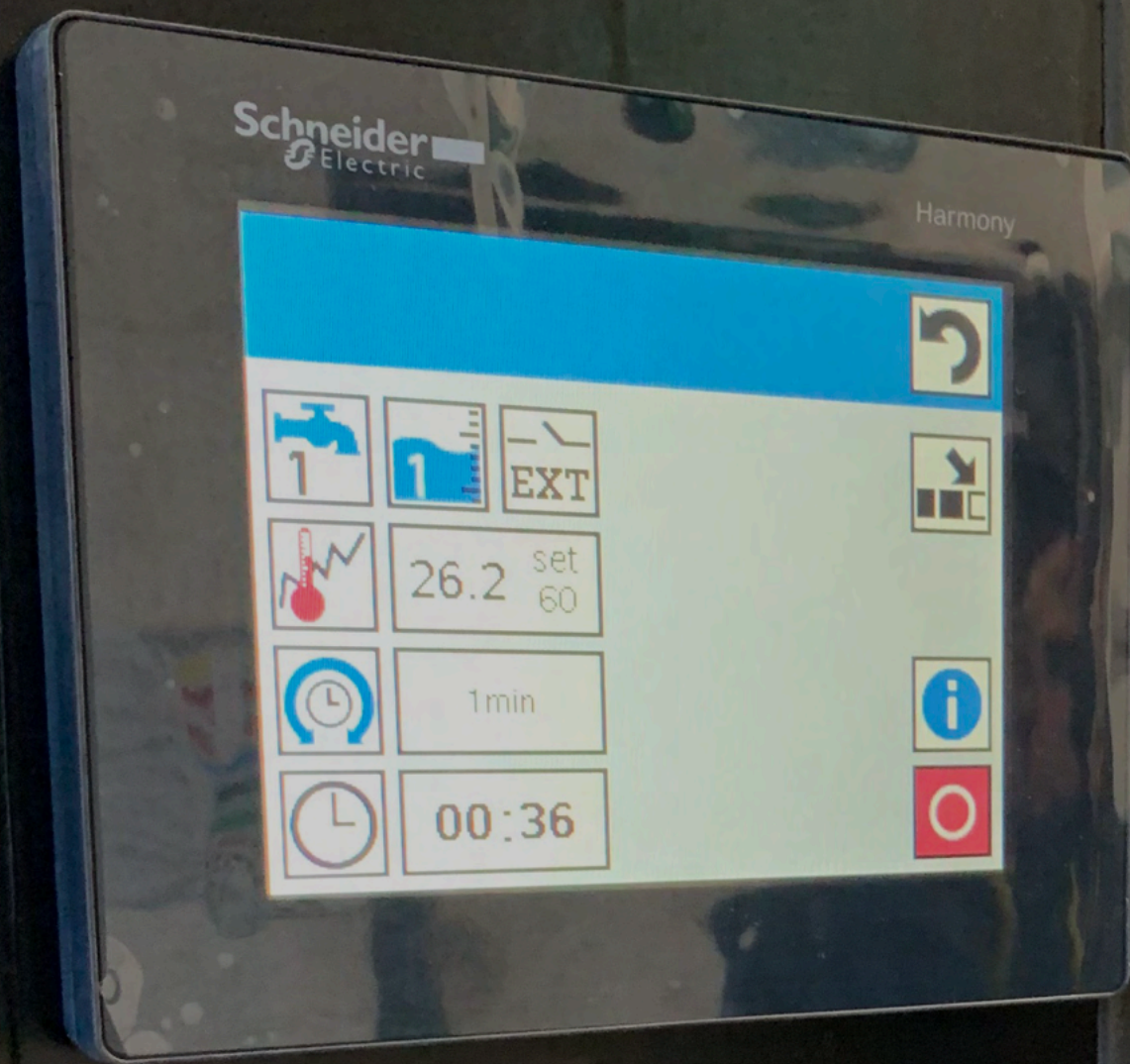


Smart Control

The smartest control for stand-alone washers just got smarter





Smart Control for Washers

The Universal Operating System

Smart Control is the universal software for your washer and dryer. Instead of antiquated circuit boards, the software is designed for a user-friendly PLC and touchscreen.

Importantly, we made sure the software works on machines **from any manufacturer**. This allows Smart Control to integrate with your current systems seamlessly.

Each day, demands of clients are growing and the wash process is getting more sophisticated. Simultaneously, current circuit boards are growing older every day, and require much effort to keep up with rising expectations. Consequently, the old software limits an organisation's potential.

Smart Control is the answer to the growing need for something new, efficient and intuitive. No longer are you limited to the borders that are set by the manufacturer of your machinery; the PLC and software allow for unlimited combinations.

With Smart Control, you are in charge of your process. That is the future of the professional laundry.

Take control of your cleaning process

Unleash the
potential
of your
organisation





UNIVERSAL CONTROL

Smart Control works with any stand-alone washer on the market. Regardless of brand or manufacturer.



CUSTOMIZATION

Create more than 100 custom programs according to your organization's and clients demands.



CLEAN GREEN

Determine exactly how much water you use. By not using more natural resources than necessary, we take care of our planet.



USER FRIENDLY

Even though Smart Control comes with a user manual, the OS is designed for user friendliness.



INTEGRATION

A plethora of settings allow Smart Control for a seamless integration in your organization.



MULTIPLE LANGUAGES

Smart Control speaks English, French, Spanish, German & Dutch.



FREE UPDATES

We keep updating Smart Control so you have the best operating system on your washer. That's why they're free.

What You Control

In a nutshell



100+ configurable programs



10+ washing phases per program



Connect with external dosing



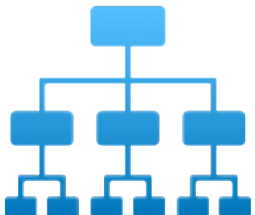
Custom water levels



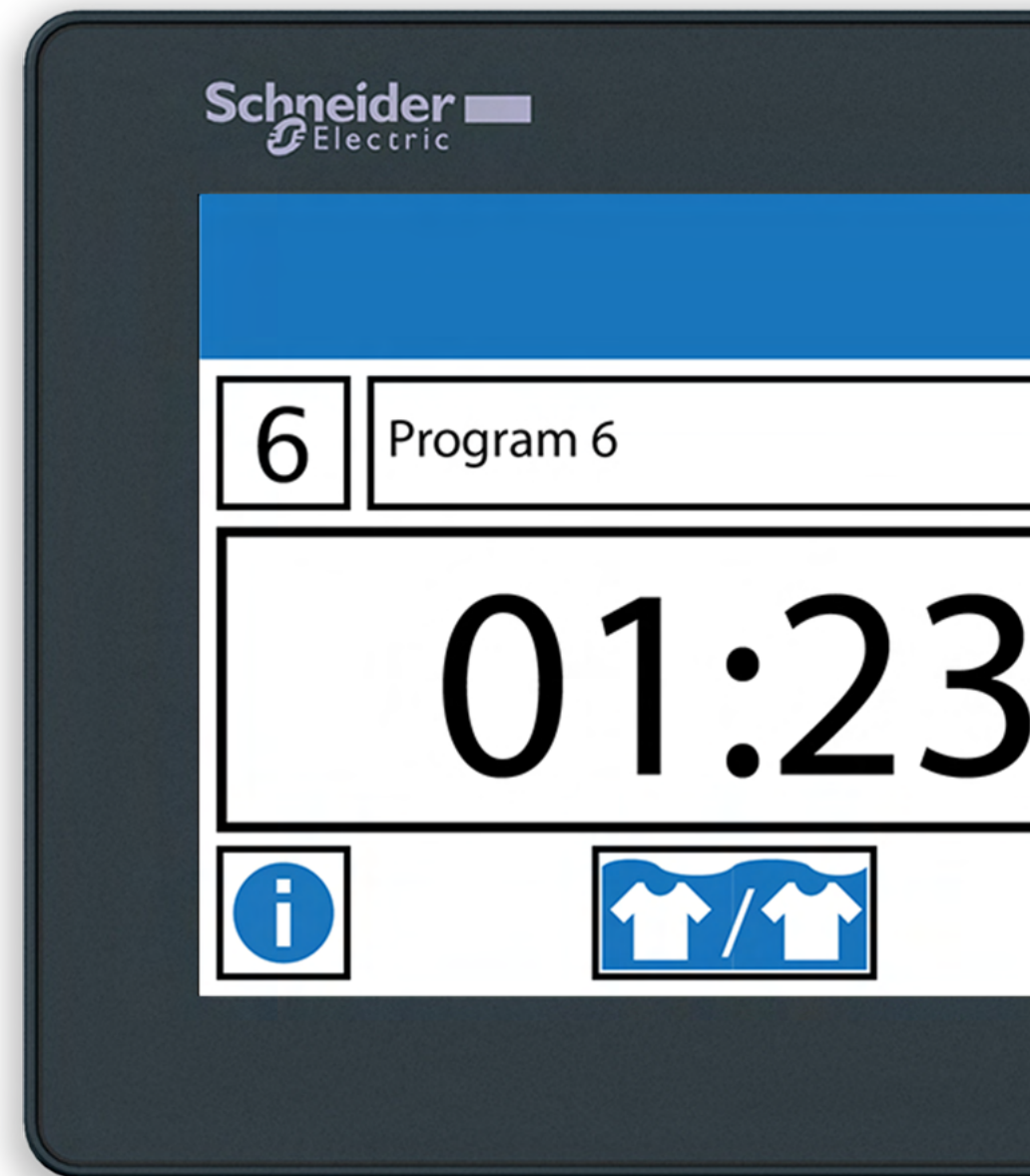
program remotely via Wi-fi



Safety and failure checks



And many more features



Limit the Waste of Water

With Smart Control, you easily control your water usage. This makes it possible to match the water to the load of your washer.

Save water & the planet

A study by TKT shows that matching your washer's water level to the actual load results in significant energy savings. The institute measures that water will be saved by 34% when loaded with 45 kg of linen in a 68 kg washer. There's one condition though: the water needs to match the load.

With Smart Control, users can control their water usage to limit the waste of water.

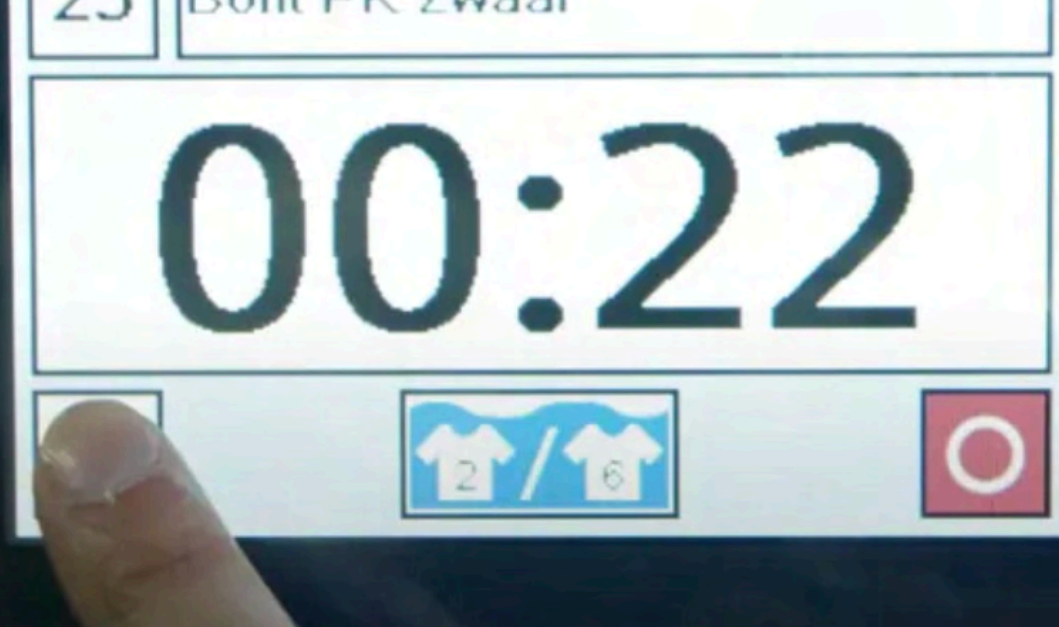


Still from Schneider Case Study

Reduce Errors & Increase Volume by 30%

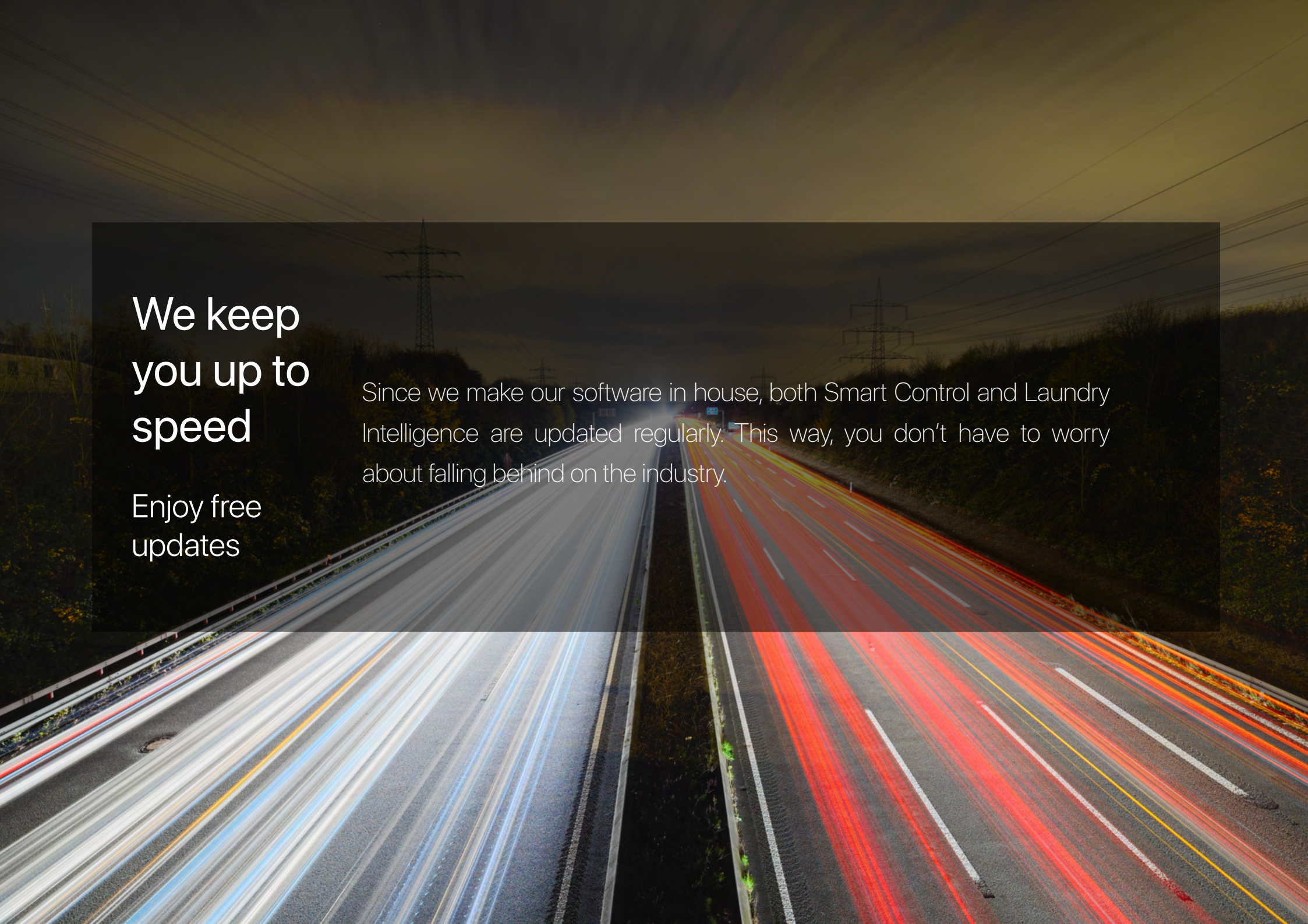
In 2020, Schneider Electric published a case study where it explored the benefits of Smart Control at Elis. Here they found that operators **make less mistakes** when they use Smart Control to operate a washer. The simplicity of the control allows one to go straight to the preferred program.

Schneider Electric also found that volume increased **by 30%** without increasing **costs**. That's 30% more coats, sheets, shirts, mats, etc.



Elis Case Study

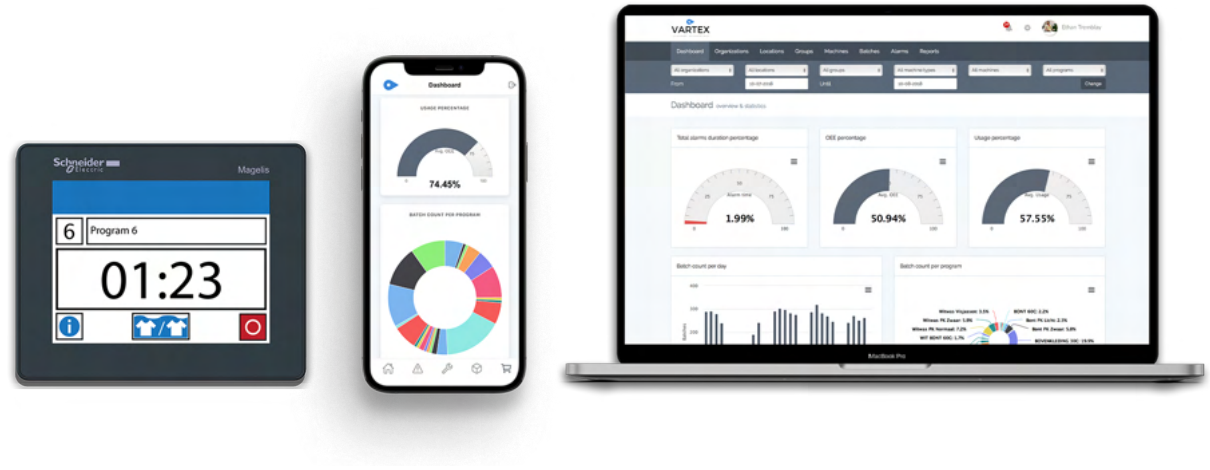
- Vortex customers generate **30% more volume on average**, without increasing costs.
- The **output** of Vortex' customers increases by **20% on average**.
- The collection and analysis of data is done automatically, saving companies costs and preventing information from being lost.
- Significant time and cost savings by reorganising washing processes.
- Selecting wash programs is **less time consuming and prone to errors**. Operators select the right wash programs for each batch on a clear display.
- Schneider Electric parts are universal, quickly and locally available. Companies are not dependent on one party for maintenance and service of machines.



We keep you up to speed

Enjoy free
updates

Since we make our software in house, both Smart Control and Laundry Intelligence are updated regularly. This way, you don't have to worry about falling behind on the industry.



Data Made Visible by IoT

Make decisions backed by clarity

Smart Control remains connected via WiFi. This means you can create custom programs and access your washer remotely. Real Time data produced by your machinery is also visible in our IoT platform, Laundry Intelligence and the Vartex App.

We create a server unique to your organisation. That's where the data, collected by your washers and dryers, is saved. You can display your data in the Laundry Intelligence dashboard and Vartex App. Here, you can also access machine documentation (such as manuals and part books), order spare parts, and much more.

Experts in Laundry Automatisatisation

25+ Years of experience

Founded in The Netherlands, Vortex is a family business with over 25 years of experience in the laundry industry. We started as a supplier of professional laundry equipment; since the beginning, we're a proud partner of the world's greatest laundries and linen services.

These relationships inspired us to help laundries clean more efficiently and environmentally friendlier. So, we created our own software solutions for laundries. And we consciously decided to do it locally in the Netherlands: Our software is proudly made in The Netherlands.

Today, we're a one-stop location in the laundry industry. That means we not only distribute machinery, but we also create software for the entire laundry: From automating stand-alone washers and dryers to tunnel washers, and everything in between. Working with the best dedicated engineers, we take on every challenge that pushes the industry forward.

Smart Control Speaks Your Language

Don't get lost in translation



Frequently Asked Questions

Q. You mention that Smart Control for Washers and Dryers are both universal. Does Smart Control fit my dryer?

A. Our Smart Control products are truly universal. So, in principle, it should fit your washer, regardless of manufacturer.

Q. How do I know if Smart Control fits my washer?

A. After reviewing the **electrical diagram** of your machine, we can give you a clear view of the possibilities.

Q. Does the (old) age of our machines matter?

A. Age matters, but like in life: age is just a number. We have modernised pretty old machines before. Just give us a number and we'll be happy to provide the best solution.

Q. What's the price of Smart Control?

A. Since we provide custom made solutions, we'll be happy to make a custom quote for you.

Get In Touch

Today, ambitious organisations with ecological responsibilities rely on our intuitive software. And if you are ready to add a piece of the future to your organisation, feel free to contact us for a chat.



Castorweg 60

8938 BE Leeuwarden, The Netherlands

058 250 47 16

info@vartex.nl